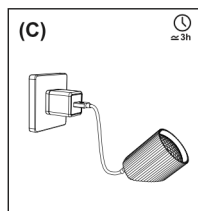
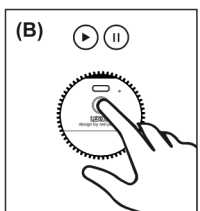
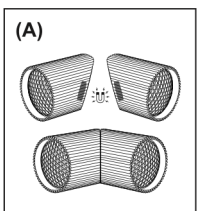
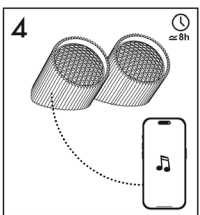
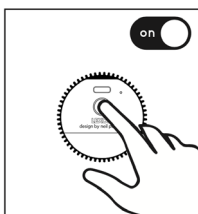
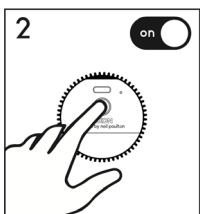
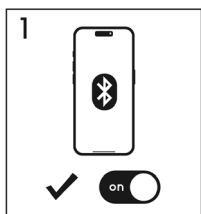
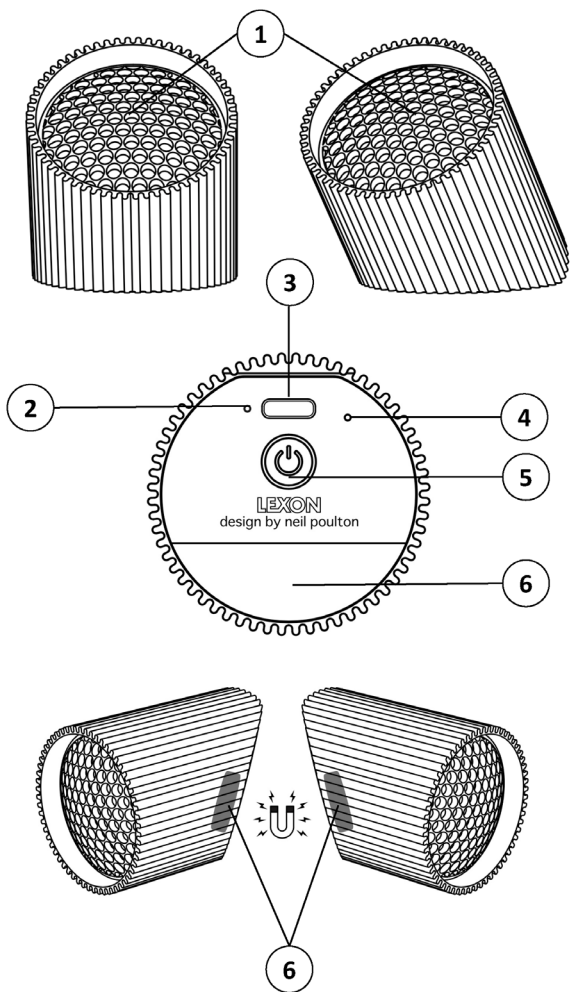


LEXON[®]

LA132
RAY SPEAKER

Design by neil poulton



ENGLISH

IN THE BOX

2x Ray Speaker

1x USB-C charging cable

1x User manual

PRODUCT OVERVIEW

1. Speaker
2. LED light for Bluetooth & Charging status
3. USB-C port
4. Microphone
5. Button
6. Magnetic surface

FIRST PAIRING

Important note: These two speakers are already paired together. Simply turn them ON, then connect them to your mobile device via Bluetooth.

1. Enable Bluetooth on your mobile device.
2. Press and hold the button on each speaker to turn them ON.
3. Select LEXON RAY SPEAKER from the Bluetooth list on your mobile device.
4. Play music.

(A) To Attach the two speakers together: Position the magnetic surfaces towards each other.

(B) Play/Pause: When music is playing, press the button to play or pause the music.

(C) Charging: Use the USB-C charging cable supplied and a USB power adapter (not supplied) or any computer to charge your device. A full charge takes 3 hours.

Unpair the two speakers: When both RAY SPEAKERS are connected, press the button on 1 RAY SPEAKER twice to disconnect them.

Pair the two speakers again: Turn ON both RAY SPEAKERS and press the button on one of the 2 RAY SPEAKERS twice to connect them together. Go to the Bluetooth settings on your mobile device and select LEXON RAY SPEAKER.

To answer or end a call, simply press the button.

LED INFORMATION

Charging: Red

Low battery: Red LED flashing slowly

Fully charged: Off

Ready to pair / Power ON: Blue LED flashing quickly

Only one speaker connected: Blue LED flashing slowly

Both speakers connected via TWS: Main unit - Blue LED flashing slowly / Second unit - Steady blue

SAFETY PRECAUTIONS

- Do not place the device near heat sources such as heaters or radiators.
- Only use the voltage specified as correct for the device.
- Do not expose the device to water during charging, as this could permanently damage the speaker or power source.
- Keep away from corrosive liquids.
- Do not insert any conductive objects into the speaker or charging port.
- Do not open the device or attempt to disassemble the internal parts or modify them in any way.

PRODUCT SPECIFICATIONS

Material: Aluminum / ABS

Weight: 0.23 lbs / 105 g each

Dimensions: Ø1.85 x 2.24"/Ø4.7 x 5.7 cm

Speaker power: 2x 3W

Water resistance: IPX4

Bluetooth version: 5.0

Bluetooth range: 10m

Frequency range: 2.402 – 2.480 GHz

Battery capacity: 700 mAh

Battery voltage: 3.7V

Input voltage: 5V

Playtime: 8h

Charging time: 3h

Charging system: USB Type-C

Operating temperature: 0°C – 35 °C

International warranty: 1 year

FRANÇAIS

DANS LA BOÎTE

2x Enceintes Ray Speaker 1x Câble de chargement USB-C 1x Manuel d'utilisation

VUE D'ENSEMBLE DU PRODUIT

1. Enceinte
2. Voyant LED pour le statut Bluetooth et de charge
3. Port USB-C
4. Microphone
5. Bouton
6. Surface magnétique

PREMIÈRE UTILISATION

Note importante: Ces deux enceintes sont déjà connectées ensemble. Allumez-les simplement, puis connectez-les à votre appareil mobile via Bluetooth.

1. Activez le Bluetooth sur votre appareil mobile.
2. Maintenez enfoncé le bouton sur chaque enceinte pour les allumer.
3. Sélectionnez "LEXON RAY SPEAKER" dans la liste Bluetooth de votre appareil mobile.
4. Lancez la musique.

(A) Pour fixer les deux enceintes ensemble: Positionnez les surfaces magnétiques l'une en face de l'autre.

(B) Lecture/Pause: Lorsque la musique est en cours de lecture, appuyez sur le bouton pour jouer ou mettre en pause la musique.

(C) Mise en charge: Utilisez le câble de chargement USB-C fourni et un adaptateur secteur USB (non fourni) ou tout ordinateur pour charger votre appareil. Une charge complète prend 3 heures.

Dissocier les deux enceintes: Lorsque les deux enceintes RAY SEPAKER sont connectées, appuyez deux fois sur le bouton de l'une des enceintes RAY SPEAKER pour les dissocier.

Associer à nouveau les deux enceintes: Allumez les deux enceintes RAY SPEAKER et appuyez deux fois sur le bouton de l'une des deux enceintes RAY pour les connecter ensemble. Accédez aux paramètres Bluetooth de votre appareil mobile et sélectionnez "LEXON RAY SPEAKER".

Pour répondre ou mettre fin à un appel, il suffit d'appuyer sur le bouton.

INFORMATIONS SUR LES LED

Charge en cours: LED Rouge

Batterie faible: LED rouge clignotant lentement

Complètement chargée: LED Éteinte

Prêt à associer / Allumée: LED bleue clignotant rapidement

Une seule enceinte connectée: LED bleue clignotant lentement

Deux enceintes connectées via TWS: Unité principale - LED bleue clignotant lentement / Deuxième unité - Bleu fixe

PRÉCAUTIONS DE SÉCURITÉ

- Ne placez pas l'appareil près de sources de chaleur telles que des radiateurs ou des radiateurs électriques.
- Utilisez uniquement la tension spécifiée comme correcte pour l'appareil.
- Ne pas exposer l'appareil à l'eau pendant la charge, car cela pourrait endommager définitivement l'enceinte ou la source d'alimentation.
- Gardez-le à l'écart des liquides corrosifs.
- Ne pas insérer d'objets conducteurs dans l'enceinte ou le port de chargement.
- Ne pas ouvrir l'appareil ni essayer de démonter les pièces internes ni de les modifier de quelque manière que ce soit.

SPÉCIFICATIONS DU PRODUIT

Matériaux: Aluminium / ABS

Poids: 105 g chacune

Dimensions: Ø4,7 x 5,7 cm

Puissance des enceintes: 2x 3W

Résistance à l'eau: IPX4

Version Bluetooth: 5.0

Portée Bluetooth: 10 m

Bande de fréquences: 2,402 – 2,480 GHz

Capacité de la batterie: 700 mAh

Tension de la batterie: 3.7V

Tension d'entrée: 5V

Autonomie: 8h

Temps de charge: 3h

Système de charge: USB Type-C

Température de fonctionnement: 0°C -35°C

Garantie internationale: 1 an

EUROPEAN UNION

CE DIRECTIVE

This device in compliance with the essential requirements and other relevant provisions of Directive 2014/53/EU. All essential radio test suites have been carried out. This restriction will be applied to all Member States of European Union.

The device has been evaluated to meet general RF exposure requirements. The device can be used in portable exposure conditions without restriction.

Declaration of Conformity

Hereby, LEXON declares that the product type LA132 is in compliance with Directives 2014/53/EU & 2011/65/EU. The full text of the EU declaration of conformity is available at the following internet address:
<https://www.lexon-design.com/assets/certifications-ce-rayspeaker.pdf>

Cet appareil est conforme aux exigences essentielles et aux autres dispositions pertinentes de la directive 2014/53/UE. Toutes les séries de tests radio essentielles ont été effectuées. Cette restriction sera appliquée à tous les États membres de l'Union européenne.

L'appareil a été évalué pour répondre aux exigences générales en matière d'exposition aux radiofréquences. L'appareil peut être utilisé dans des conditions d'exposition portable sans restriction.

Déclaration de conformité

Par la présente, LEXON déclare que le produit de type LA132 est en conformité avec les directives 2014/53/EU & 2011/65/EU. Le texte intégral de la déclaration de conformité de l'UE est disponible à l'adresse internet suivante :
<https://www.lexon-design.com/assets/certifications-ce-rayspeaker.pdf>

UK CONFORMITY ASSESSMENT

The device is in compliance with the essential requirements and other relevant provisions of the UK Radio Equipment Regulations SI 2017:1206 (as amended).

The device has been evaluated to meet general RF exposure requirements. The device can be used in portable exposure conditions without restriction.

Declaration of Conformity

Hereby, LEXON declares that the product LA132 is in compliance with the following Regulations: Radio Equipment Regulations 2017, Electrical Equipment (Safety) Regulations 2016 and The Restriction of the Use of Certain Hazardous Substances in Electrical and Electrical Equipment 2012. The Full test of the UK declaration of conformity is available at the following internet address:
<https://www.lexon-design.com/assets/certifications-ce-rayspeaker.pdf>

Bluetooth

Transmitter power: -0.41dBm(for EU/UK only)
TX/RX Frequency Range: 2400-2480MHz

DISPOSAL AND RECYCLING INFORMATION

After the implementation of the European Directive 2012/19/EU in the national legal system, the following applies: electrical and electronic devices may not be disposed of with domestic waste. Consumers are obliged by law to return electrical and electronic device at the end of their service lives to the public collecting points set up for this purpose or point of sale. Details to this are defined by the national law of the respective country. This symbol on the product, the instruction manual or the package indicates that a product is subject to these regulations. By recycling, reusing the materials or other forms of utilizing old devices, you are making an important contribution to protecting our environment.

USA - FCC STATEMENT

This device complies with part 15 of the FCC Rules.

Operation is subject to the following two conditions:

- (1) This device may not cause harmful interference, and
- (2) this device must accept any interference received, including interference that may cause undesired operation.

Notice:

Any changes or modifications not expressly approved by the party responsible for compliance could void your authority to operate the equipment.

NOTE: This equipment has been tested and found to comply with the limits for a Class B digital device, pursuant to part 15 of the FCC Rules. These limits are designed to provide reasonable protection against harmful interference in a residential installation.

This equipment generates, uses and can radiate radio frequency energy and, if not installed and used in accordance with the instructions, may cause harmful interference to radio communications. However, there is no guarantee that interference will not occur in a particular installation. If this equipment does cause harmful interference to radio or television reception, which can be determined by turning the equipment off and on, the user is encouraged to try to correct the interference by one or more of the following measures:

- Reorient or relocate the receiving antenna.
- Increase the separation between the equipment and receiver.
- Connect the equipment into an outlet on a circuit different from that to which the receiver is connected.
- Consult the dealer or an experienced radio/ TV technician for help.

RF exposure statements

The device has been evaluated to meet general RF exposure requirement. The device can be used in portable exposure condition without restriction.

CANADIAN COMPLIANCE STATEMENT

This device complies with Industry Canada license-exempt RSSs. Operation is subject to the following two conditions:

- (1) This device may not cause interference, and
- (2) This device must accept any interference, including interference that may cause undesired operation of the device.

This Class B digital apparatus complies with Canadian ICES-003.

Le présent appareil est conforme aux CNR d'Industrie Canada applicables aux appareils radio exempts de licence.

L'exploitation est autorisée aux deux conditions suivantes :

- (1) l'appareil ne doit pas produire de brouillage, et
- (2) l'utilisateur de l'appareil doit accepter tout brouillage radioélectrique subi, même si le brouillage est susceptible d'en compromettre le fonctionnement.

This device contains licence-exempt transmitter(s)/receiver(s) that comply with Innovation, Science and Economic Development Canada's licence-exempt RSS(s). Operation is subject to the following two conditions:

This device may not cause interference.

This device must accept any interference, including interference that may cause undesired operation of the device.

RF exposure statement

The device has been evaluated to meet general RF exposure requirement. The device can be used in portable exposure condition without restriction.

Cet appareil contient des émetteurs / récepteurs exemptés de licence conformes aux RSS (RSS) d'Innovation, Sciences et Développement économique Canada. Le fonctionnement est soumis aux deux conditions suivantes:

- Cet appareil ne doit pas causer d'interférences.
- Cet appareil doit accepter toutes les interférences, y compris celles susceptibles de provoquer un fonctionnement indésirable de l'appareil.

Déclaration d'exposition RF

L'appareil a été évalué pour répondre aux exigences générales d'exposition aux RF. L'appareil peut être utilisé dans des conditions d'exposition portable sans restriction.



LEXON

125, Avenue des Champs-Élysées - 75008 Paris - FRANCE

All trademarks, logos and brand names are the property of their respective owners. Pictures and specifications are not contractual. Assembled in China.

lexon-design.com | [@lexondesign](https://twitter.com/lexondesign)